



# W I N D O W S

WAUSAU WINDOW AND WALL SYSTEMS

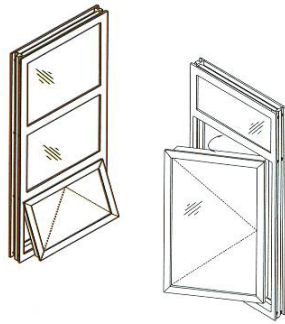
THERE'S A REASON SO MANY OF OUR CULTURE'S MOST IMPORTANT BUILDINGS, FROM ART MUSEUMS TO ELEMENTARY SCHOOLS, HAVE WAUSAU WINDOWS. FOR NEARLY 50 YEARS, WAUSAU HAS SET THE STANDARD FOR PERFORMANCE, CRAFTSMANSHIP AND EASE OF INSTALLATION. OVER 100 ENGINEERING AND DESIGN PROFESSIONALS ENSURE EACH BUILDING GETS THE WINDOWS THAT ARE RIGHT FOR ITS NEEDS, SUCH AS PRE-ENGINEERED STANDARD SCHOOL WINDOWS, ARCHITECTURAL GRADE HOSPITAL WINDOWS, OR CUSTOMIZED HISTORICALLY ACCURATE REPLACEMENTS IN ANY COLOR. WAUSAU ALSO SUPPORTS YOUR SUSTAINABLE DESIGN GOALS, AND OFFERS AN INDUSTRY-LEADING PRODUCT WARRANTY OF UP TO 10 YEARS. [WWW.WAUSAUWINDOW.COM](http://WWW.WAUSAUWINDOW.COM) 1 877 678 2983



UNIVERSITY OF MARYLAND - THURGOOD MARSHALL LAW LIBRARY  
RICHTER CORNBROOKS GRIBBLE, INC.  
2250-E SERIES EPIC

CHICAGO SCHOOL DISTRICT - NATIONAL TEACHERS ACADEMY - PDS  
DE STEFANO + PARTNERS  
3151-ST SINGLE HUNG TILT

**2250**  
**3250**  
**4250**  
**4250-OS**  
**2200**

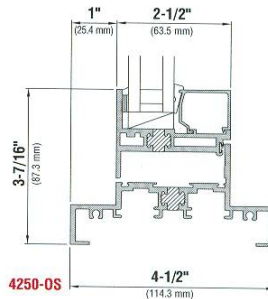
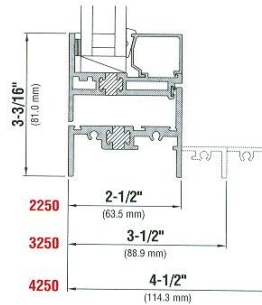


- 2-1/2", 3-1/2", and 4-1/2" frame depth
- 1/8" principal wall thickness
- Flush vent construction reduces collection of dust and debris
- Dual or triple factory-glazed with access door option
- 5/8" or 1" between-glass Venetian blind option
- Available as curtainwall insert vents
- Set back glass provides distinctive aesthetic effect on 4250-OS Offset
- 2200 Series: 2-1/2" non-thermal

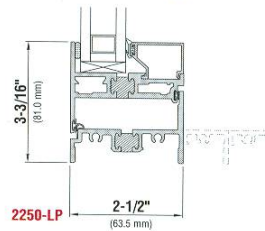
AAMA AW-60,  $\leq 0.10$  cfm/sqft air@6.24 psf, 12.0 psf water  
U-Factor\* 0.43-0.62, CRF† 44-57, STC\* 29-44



Wausauwindow.com 1 877 678 2993  
Download comprehensive details, specifications and product performance information.

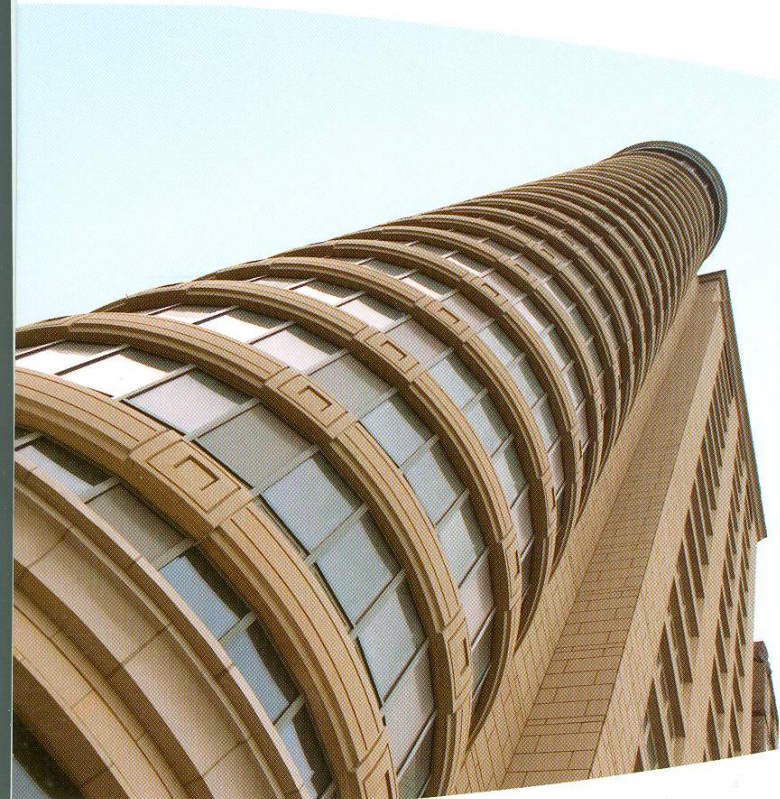


**2250/3250/4250-LP Option**



- 2-1/2", 3-1/2", and 4-1/2" frame depth
- Narrow sightlines for improved daylighting
- AAMA AW-60 rated
- Dual compression weatherstrip
- Aluminum strap anchors
- 1/8" wall thickness at hardware
- Flush vent construction reduces collection of dust and debris
- Lower U-Factor, higher CRF

AAMA AW-60,  $\leq 0.10$  cfm/sqft air@6.24 psf, 12.0 psf water  
U-Factor\* 0.43-0.62, CRF† 44-57, STC\* 32-45

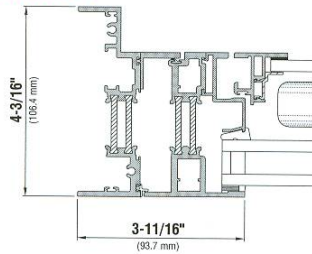


840 NORTH LAKESHORE, CHICAGO  
LUCIEN LAGRANGE ARCHITECTS  
**4250 SERIES**

\*Contact Wausau for detailed results.

THE BEST IN THERMAL AND ACOUSTICAL WINDOW PERFORMANCE

**HPW-64**

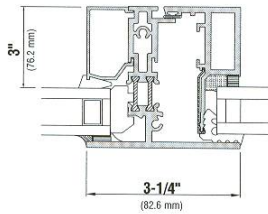


- Oversize Insulbar® thermal barrier
- 1/8" principal wall thickness
- Triple factory-glazed with hinged or lift-out access door option
- 5/8" or 1" between-glass Venetian blind option

AAMA AW-60, ≤ 0.10 cfm/sqft air@6.24 psf, 12.0 psf water  
U-Factor\* 0.41, CRF1\* 64

LARGE HIGH-PERFORMANCE INSWING VENTS WITH INDISTINGUISHABLE SIGHTLINES FROM FIXED LITES

**3250iV / 4250iV-Visuline**

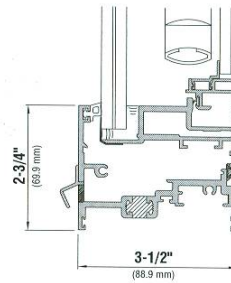


- Structural "no-sag" glazing allows for larger vents
- Single-handle multi-point lock with corner transmission option
- 5/8" or 1" between-glass Venetian blinds with hinged access door option
- Beveled exterior face option
- Optional frames with Insulbar® thermal barrier

AAMA AW-60, ≤ 0.10 cfm/sqft air@6.24 psf, 15.0 psf water  
U-Factor\* 0.44-0.60, CRF1\* 56-67, STC\* 32-45

HURRICANE IMPACT-TESTED INSWING VENTS AND FIXED WINDOWS WITH UNIFORM SIGHT LINES

**3250-HP**

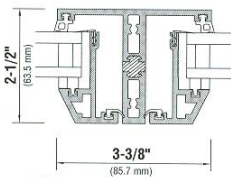


- Miami-Dade Product Control Approved
- Tested to protocols PA 20194, PA 20294, and PA 20394 "Large Missile Impact & Cyclic Pressure Loading"
- Laminated glass, insulating glass or dual glazed
- 15 psf static water test pressure
- 5/8" or 1" between-glass Venetian blind option

AAMA AW-120, ≤ 0.10 cfm/sqft air@6.24 psf, 15.0 psf water  
U-Factor\* 0.43-0.62, CRF1\* 53-64, STC\* 42-45

FEATURES A BEVELED EXTERIOR FACE REPLICATING CLASSIC STEEL AND WOOD WINDOWS

**2250-Epic / 3250-Heritage**



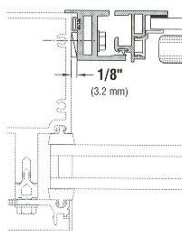
**2250-E**

- 1/8" principal wall thickness
- Equal sight lines at vents and fixed lights
- Structural "no-sag" glazing allows for larger vents
- 3-1/4", 5", 6" frame depths; beveled or profiled exterior face on Heritage series
- Beveled muntin option

AAMA AW-60, ≤ 0.10 cfm/sqft air@6.24 psf, 12.0 psf water  
U-Factor\* 0.43-0.62, CRF1\* 47-55, STC\* 32-34

FOR INSIDE INSTALLATION LEAVING EXISTING WINDOWS INTACT

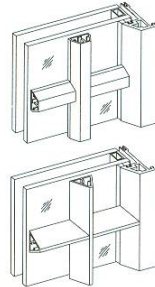
**SEAL**



- Concealed hinges and custodial locks
- 5/8" or 1" between-glass Venetian blind option
- Psychiatric retrofit option on 2187-HD

TO DIVIDE DAYLIGHT OPENINGS

**Muntins**

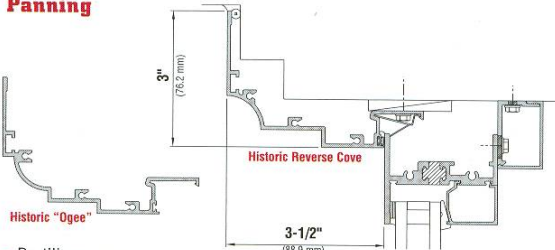


- Exterior and/or interior grids
- Glass-applied
- Caming tape
- Between-glass
- True divided lite

UNITED STATES FEDERAL COURTHOUSE  
MONTGOMERY ALABAMA  
BARGANIER DAVIS SIMS ARCHITECTS ASSOCIATED  
HERITAGE SERIES

FOR PREPARATION OF REPLACEMENT WINDOW OPENINGS

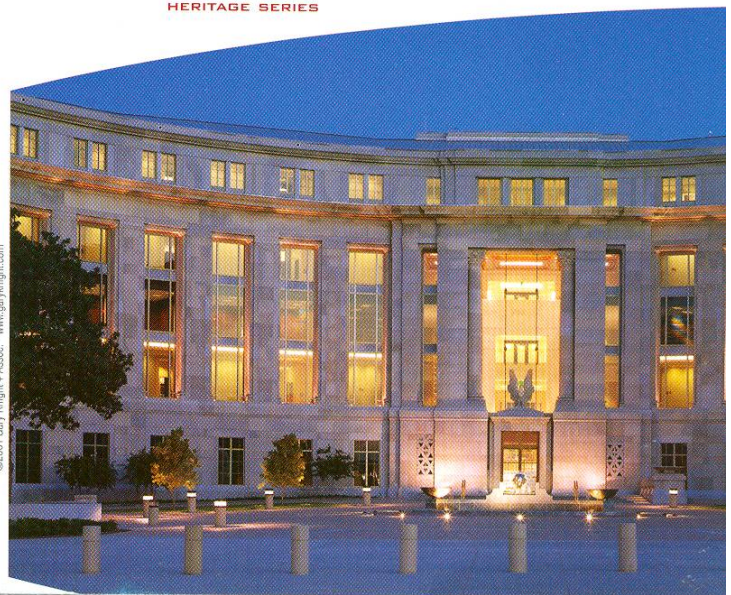
**Panning**



- Rectilinear, ogee or reverse cove shapes
- Spring clips for ease of installation

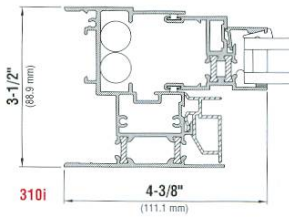
\*Contact Wausau for detailed results.

©2001 Gary Knight + Assoc. - www.garyknight.com



HUNG & ROLLING

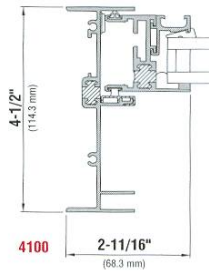
INDUSTRY-LEADING HUNG WINDOW PERFORMANCE, TILT-IN AND SIDE LOAD  
**310i/3100/3150/3151**



- 3-1/2" and 4-1/2" frame depth
- Bead glazed
- Flush screen frame
- Common stackable frame with integral transoms, fixed lites and spandrels
- Beveled sash and muntins for historic aesthetic option
- 5/8" between-glass Venetian blinds with hinged access door option

AAMA AW-60, ≤ 0.30 cfm/sqft air@6.24 psf, 12.0 psf water  
U-Factor\* 0.49-0.62, CRF1\* 49-53, STC\* 32-37

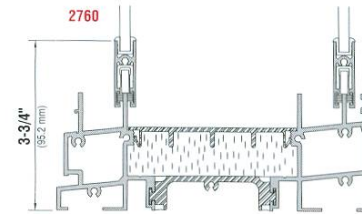
EXCEPTIONAL DESIGN FLEXIBILITY, SMOOTH HORIZONTAL ROLLING OPERATION  
**410i/4100/4100i**



- 3-1/2" and 4-1/2" frame depth
- Bead glazed
- Flush screen frame
- Common stackable frame with integral transoms, fixed lites and spandrels
- 5/8" between-glass Venetian blinds with hinged access door option
- Beveled sash and muntins for historic aesthetic option

AAMA AW-60, ≤ 0.30 cfm/sqft air@6.24 psf, 12.0 psf water  
U-Factor\* 0.46-0.62, CRF1\* 49-53, STC\* 32-37

"FOUR-TRACK" ACCOUSTICAL HORIZONTAL ROLLING AND HUNG  
**2700/2760**

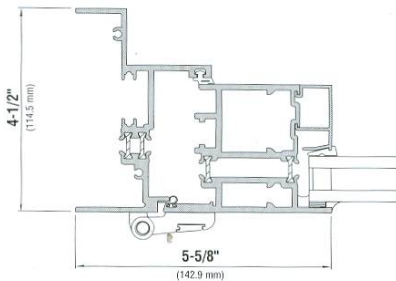


- 4-1/2" frame depth with non-structural thermal barrier
- Two-color finish
- Low maintenance cost and easy cleaning
- Smooth operation
- Indirect ventilation
- 6-3/4" frame depth with optional sound absorption

AAMA HC-40, ≤ 0.37 cfm/sqft air@6.24 psf, 10.0 psf water  
U-Factor\* 0.48-0.57, CRF1\* 56-66, STC\* 37-51

TERRACE & PATIO DOORS

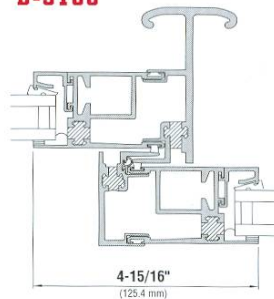
DURABILITY, HIGH-PERFORMANCE, EASE OF OPERATION AND EURO-STYLE HARDWARE  
**TD-4250i**



- Out-swing or in-swing operation
- Out-swing available with French door astragal rails for full opening
- A single, designer handle operates multiple locking points
- Stacks with all Wausau 4-1/2" frame depth products
- Low-profile sills available

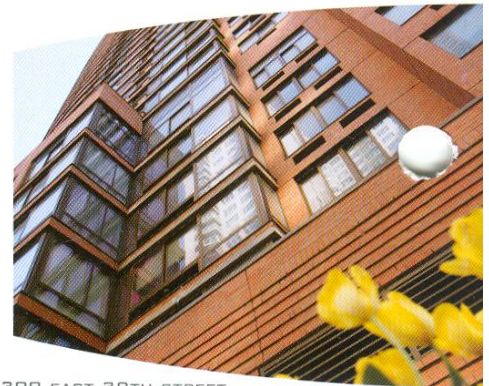
AAMA HC-60, ≤ 0.10 cfm/sqft air@6.24 psf, 12.0 psf water  
U-Factor\* 0.50, CRF1\* 58, STC\* 32-34

EXCEPTIONAL DESIGN FLEXIBILITY, SMOOTH OPERATION  
**D-5100**



- Inside-slide configuration
- Bead glazed
- Adjustable roller housing with grease packed ball-bearing wheels
- Stainless steel roller tracks
- 5/8" between-glass Venetian blinds with hinged access door option

AAMA AW-60, ≤ 0.30 cfm/sqft air@6.24 psf, 12.0 psf water  
U-Factor\* 0.57-0.67, CRF1\* 51-53, STC\* 32-38



300 EAST 39TH STREET  
NEW YORK  
DAVID BRODY BOND, LLP  
4100 SERIES



7800 INTERNATIONAL DRIVE • P.O. Box 1746 • WAUSAU, WI 54402-1746  
TOLL FREE 1 877 678 2983 • FAX 1 715 843 4350  
E-MAIL • INFO@WAUSAUWINDOW.COM

\*Contact Wausau for detailed results.