

TRU-WOOD CABINETS

Specification Catalog

Severe Use



Made in U.S.A

41778 Hwy 77 N
P.O. Box 640
Ashland, Al 36251
(256) 354-3378
(800) 982-8056
Fax (256) 354-4245
Fax (256) 354-7440

950 Charles St.
Suite 100
Longwood, Fl 32750
(407) 331-1858
(800) 221-6813
Fax (407) 331-1861
Fax (407) 331-7483

www.truwood.com



WALL CABINET

Face Frame:
3/4 x 1 3/4" hardwood
morticed and tenoned
glued and stapled

Hinge: Semi-concealed
wrap-around hinges

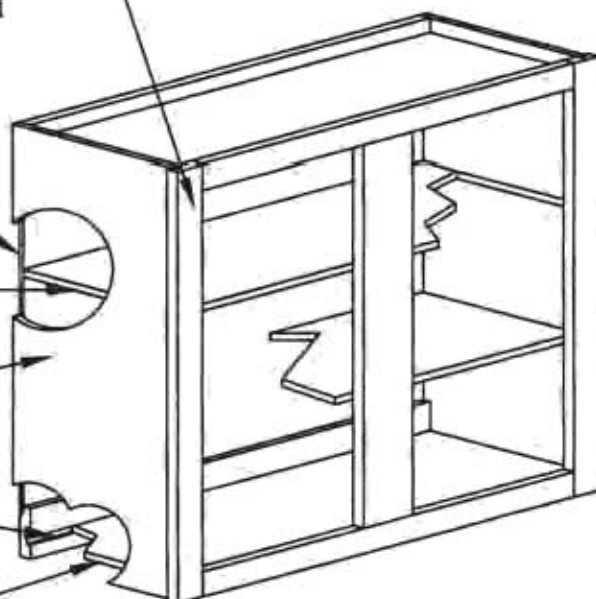
Back:
1/4" plywood

Shelf: Fixed
1/2" plywood
with edgbanding

End Panel:
1/2" plywood

Hanging Rail: solid wood
3/4 x 3 1/2" grooved
to accept top & bottom

Top & Bottom:
1/2" plywood



SEVERE USE CONSTRUCTION

1. Meets minimum property requirements for HUD, FHA, and VA.
2. Drawers have dual steel side mounted guides with ball bearing rollers. Minimum 75# rated capacity.
3. All Shelves are dadoed into end panels.
4. All Backs are rabbetted into end panels, glued, and stapled into place.
5. All Face Frames are dadoed to receive end panels, and are glued and stapled inside the cabinet.
6. All Drawer Sides and Ends are dadoed to receive Bottoms.
7. All Drawers are Standard depth.
8. Corner Blocks are used on toe board and cross members.
9. Staples are used through floor into cross members and through backs into shelves.
10. Finish consists of stain, one coat of catalyzed sealer, one catalyzed top coat. Each coat is oven dried and sealer coat is sanded. Plywood parts are UV finished; finish equals or surpasses NKCA/ANSI specs.
11. All dimensions are nominal.

BASE CABINET

Support Brackets:
3/4 x 1 3/4 solid wood

Face Frame:
3/4 x 1 3/4" hardwood
morticed and tenoned
glued and stapled

Back:
1/4" plywood

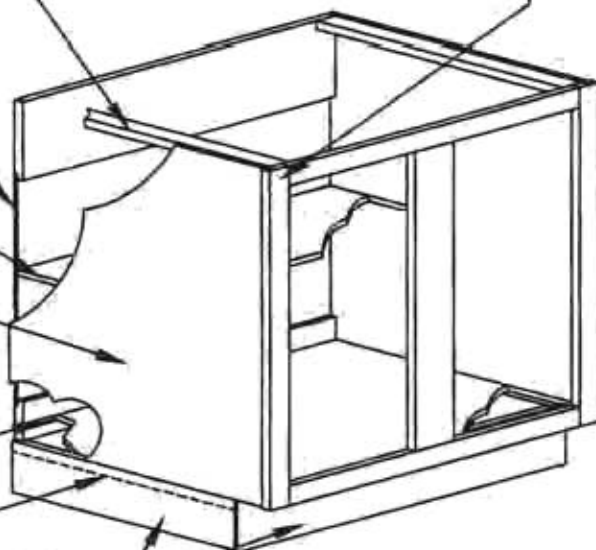
Shelf: Fixed
1/2" plywood
with edgbanding

End Panel:
1/2" plywood

Hanging Rail: solid wood
3/4 x 3 1/2" grooved
to accept top & bottom

Floor Brace:
3/4" solid wood

Toe Kick:
3 pc. 3/4" treated pine



Hinge: Semi-concealed
wrap-around hinges

Drawer Construction

Sides - 11/16" solid lumber
Ends - 11/16" solid lumber
Bottom - 1/4" plywood
Hardware - Dual side
mounted guides with ball
bearing rollers; Minimum
75# rated capacity; positive
stop lock

Tru-Wood Cabinets Inc.

Wood Characteristics

SEVERE LINE

RED BIRCH

- A hardwood with a color range of light pink to reddish brown to slightly purple. Natural characteristics of this wood include a tight, indistinct grain, streaky color similar to figured or curly grain with contrasting shades of red and brown. Color variation will be significant. Heartwood may run from light brown tinged with red to dark brown. Mineral streaks are acceptable with no limits. The diffuse-porous grains will tend to stain unevenly giving the wood a polychromatic appearance.

BALTIC BIRCH

- A hardwood that runs in the color range of off-white to light brown. Natural characteristics include fleck, mineral streaks, pin knots and light heartwood. Mineral streaks are acceptable with no limits. This diffuse-porous wood stains unevenly giving the wood a polychromatic appearance.

RUSSIAN MAPLE

- A hardwood that runs in the color range of off-white to light brown. Close even grain pattern with a smooth texture. Natural characteristics include fleck, mineral, pin knots and light heartwood.

RED OAK

- An open-pored hardwood that has a color range from tan to reddish brown. Natural characteristics of this wood include mineral streaks, pin knots, ray flecking, and a small amount of sap wood. Mineral streaks may run from an olive to greenish-black brown discoloration.

WHITE OAK

- An open-pored hardwood that is a hard, tough and straight grained. The heartwood is grayish brown and the sapwood is nearly white. There will be a wide range of color variation in white oak. White sapwood and mineral streaks are acceptable. Natural characteristics of white oak include ray flecking.

HEVEA

- *Hevea brasiliensis* is an excellent eco-friendly mostly straight grained wood. The color ranges from a pale cream to yellowish brown. Natural characteristics include minute mineral streaks and pin knots. Due to the variety of wood, multiple finger joints in frames and doors are acceptable.

The Natural Beauty of Wood

The beauty of our finished cabinetry comes from the qualities of wood itself. The select solid hardwood and hardwood veneers used by TRU-WOOD Cabinets may vary in color from shades of white, red, black and even green in areas. Mineral streaks are often present in the finest hardwoods where the wood has absorbed minerals from the soil during the years of growth. Grain patterns and apparent textures will vary from "even" to "relatively wild".

These natural variations will appear throughout your cabinetry. They will occur on adjacent cabinets, between pairs of doors and/or drawers on the same cabinet or even within the same panel.

We call these characteristics to your attention because the effect of these variations in your entire room may be different from what you see now in viewing a small display or a finished sample. The variations are broad, but they are the beauty of natural wood.

We mention these conditions because neither TRU-WOOD Cabinets nor your TRU-WOOD Cabinets dealer can be held responsible for the type of degree of variation you may experience in your cabinetry.

It must be remembered that Mother Nature keeps on working after you have installed your original order.

Tru-Wood Cabinets Inc.

Color Chart/Finish Descriptions

Severe Line

	Russian Maple	Baltic Birch		White Oak		Hevea	Red Birch		Red Oak	
	Shenandoah	Concord	Shadowood	Oakhill	Liberty	Frontier	Birchwood	Oakridge	Oakwood	Colonial Classic
Natural	✓	✓	✓			✓	✓	✓	✓	✓
Harvest	✓	✓	✓	✓	✓	✓	✓	✓	✓	✓
Spice		✓	✓	✓	✓	✓				
Ginger							✓	✓	✓	✓

Tru-Wood finishes are the latest in finish technology with the use of our new finishing equipment.

Natural- A clear sealer and topcoat that permits the natural colors to be displayed beautifully.

Harvest- A light-honey color that highlights the grain patterns, colors, and textures.

Spice- A medium reddish-brown color.

Ginger- A medium reddish-brown color.

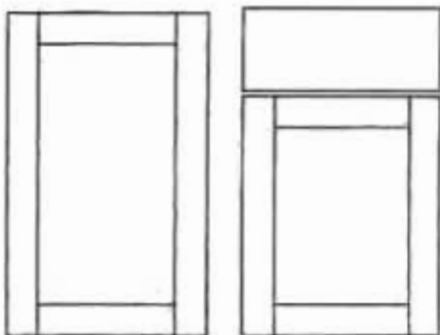
Note for Pricing:

Refer back to the Tru Series, Elite Series, & Value Series for Pricing.

Note: All finishes will age over time depending on many environmental conditions in your home. Please be aware that humidity, smoke, time, cleaning chemicals, and direct sunlight will cause the finish to age over time. These changes are acceptable throughout the industry.

SEVERE SERIES DOOR STYLES

RUSSIAN MAPLE



Shenandoah

Door is a 5 piece Full Overlay with a 3/8" reveal

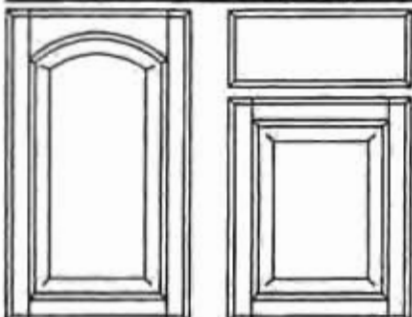
Door is 3/4" thick with a 1/4" Russian Maple recessed veneer flat panel surrounded by 2 1/4" solid Russian Maple stiles and rails. Outside profiles have a square eased radius.

Drawer Front is a 3/4" solid Russian Maple slab with a square eased radius outside profile.

Requires hardware

Available in Square only

BALTIC BIRCH



Concord

Door is a 5 piece Partial Overlay with a 1 1/4" reveal

Door is 3/4" thick with a 5/8" solid wood, raised Baltic Birch center panel with 2" solid wood stiles and rails with a 14 degree reverse bevel outside edge profile.

Drawer Front is a 3/4" solid Baltic Birch slab with a 14 degree beveled edge profile.

Available in Square or Arch

Shadowood

Door is a solid slab Partial Overlay with a 1 1/4" reveal

Door is 18mm thick veneer 13 ply Baltic Birch slab with a reverse bevel edge profile.

Drawer Front is 18mm thick veneer 13 ply Baltic Birch slab with a reverse bevel edge profile.

Available in Square only

WHITE OAK



Oak Hill

Door is a 5 piece Partial Overlay with a 1 1/4" reveal

Door is 3/4" thick with a 5/8" solid White Oak raised center panel with 2" solid wood stiles and rails with a 14 degree outside edge profile

Drawer Front is a 3/4" solid White Oak slab with a 14 degree beveled edge profile.

Available in Square or Cathedral

Liberty

Door is a 5 piece Partial Overlay with a 1 1/4" reveal

Door is 3/4" thick with a 3/16" oak recessed veneer flat panel surrounded by 2" solid wood 14 degree reverse bevel stiles and rails.

Drawer Front is a 3/4" solid White Oak slab with a 14 degree beveled edge profile.

Available in Square only

SEVERE SERIES DOOR STYLES

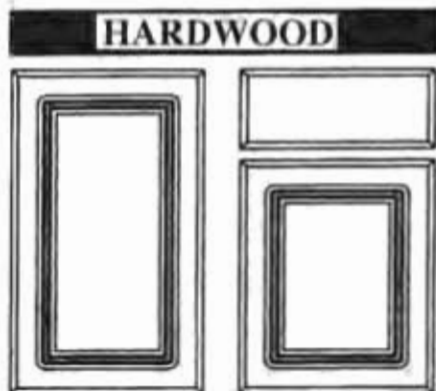
Frontier

Door is a routed slab Partial Overlay with a 1" reveal

Door is a 3/4" solid routed panel with a 3/8" deep decorative route with a 14 degree outside edge profile.

Drawer Front is a 3/4" solid wood slab with a 14 degree outside edge profile.

Available in Square only



Oakridge

Door is a 5 piece Partial Overlay door with a 1 1/4" reveal

Door is 3/4" thick with a 3/16" recessed Oak veneer flat center panel surrounded by 2" solid wood 14 degree reverse bevel stiles and rails

Drawer Front is a 3/4" thick slab with a 14 degree beveled edge profile.

Available in Square or Cathedral



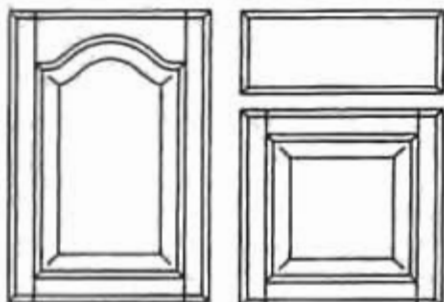
Oakwood

Door is a 5 piece Partial Overlay door with a 1 1/4" reveal

Door is 3/4" thick with a 5/8" solid Oak raised center panel surrounded by 2" solid wood 14 degree reverse bevel stiles and rails

Drawer Front is a 3/4" thick slab with a 14 degree beveled edge profile.

Available in Square or Cathedral



Colonial Classic

Door is a 3/4" solid wood slab Partial Overlay door with a 1 1/4" reveal.

Door is 3/4" thick with rounded edges & 3/4" battens attached to the back of the door.

Drawer Front is a 3/4" thick slab with rounded edges.

Available in Square only

