

SMART

CABINETRY

Clean, understated with recessed panel styling makes Brighton the perfect match for any finish and any room

Solid 1/2' cabinet construction
6-way adjustable hinges

Hardwood drawers with dovetail joinery
5-year Limited Warranty

BRIGHTON



** This printed brochure is not a 100% accurate representation of wood and colors see dealer for actual displays and samples before purchase



GINGER



HONEY



PECAN



CARME



CHESTN



COFFEE

The beauty and durability of oak, blended with subtly recessed panels for quiet elegance

Solid 1/2' cabinet construction
Hardwood drawers with dovetail joinery

6-way adjustable hinges
5-year Limited Warranty

SMART

CABINETS



NATURAL



CINNAMON



PECAN

DOVER

** This printed brochure is not a 100% accurate representation of wood and colors
see dealer for actual displays and samples before purchase

SMART

CABINETS

Manchester's wide mitered framing and bold lines instantly energize any kitchen, bath, or family room.

Solid 1/2' cabinet construction
6-way adjustable hinges

Hardwood drawers with dovetail joinery
5-year Limited Warranty

MANCHESTER



** This printed brochure is not a 100% accurate representation of wood and colors see dealer for actual displays and samples before purchase



GINGER



HONEY



PECAN



CARMEL



CHESTNUT



COFFEE

Oxford brings timeless appeal to an American standard. Solid raised panel styling in durable oak hardwood... the classic kitchen.

Solid 1/2' cabinet construction
Hardwood drawers with dovetail joinery

6-way adjustable hinges
5-year Limited Warranty

SMART

CABINETS



NATURAL



CINNAMON



PECAN

OXFORD

** This printed brochure is not a 100% accurate representation of wood and colors
see dealer for actual displays and samples before purchase

SMART

CABINETY

Prescott's square styling and solid raised panels give any room a deeper level of detail.

Solid 1/2' cabinet construction
6-way adjustable hinges

Hardwood drawers with dovetail joinery
5-year Limited Warranty

PRESCOTT



** This printed brochure is not a 100% accurate representation of wood and colors see dealer for actual displays and samples before purchase



GINGER



HONEY



PECAN



CARMEL



CHESTNUT



COFFEE

SMART

CABINETS

Shaker simplicity with recessed panel moves easily from the kitchen or bath to an elegant entertainment center.

Solid 1/2' cabinet construction
6-way adjustable hinges

Hardwood drawers with dovetail joinery
5-year Limited Warranty

SHEFFIELD



** This printed brochure is not a 100% accurate representation of wood and colors see dealer for actual displays and samples before purchase



GINGER



HONEY



PECAN



CARME

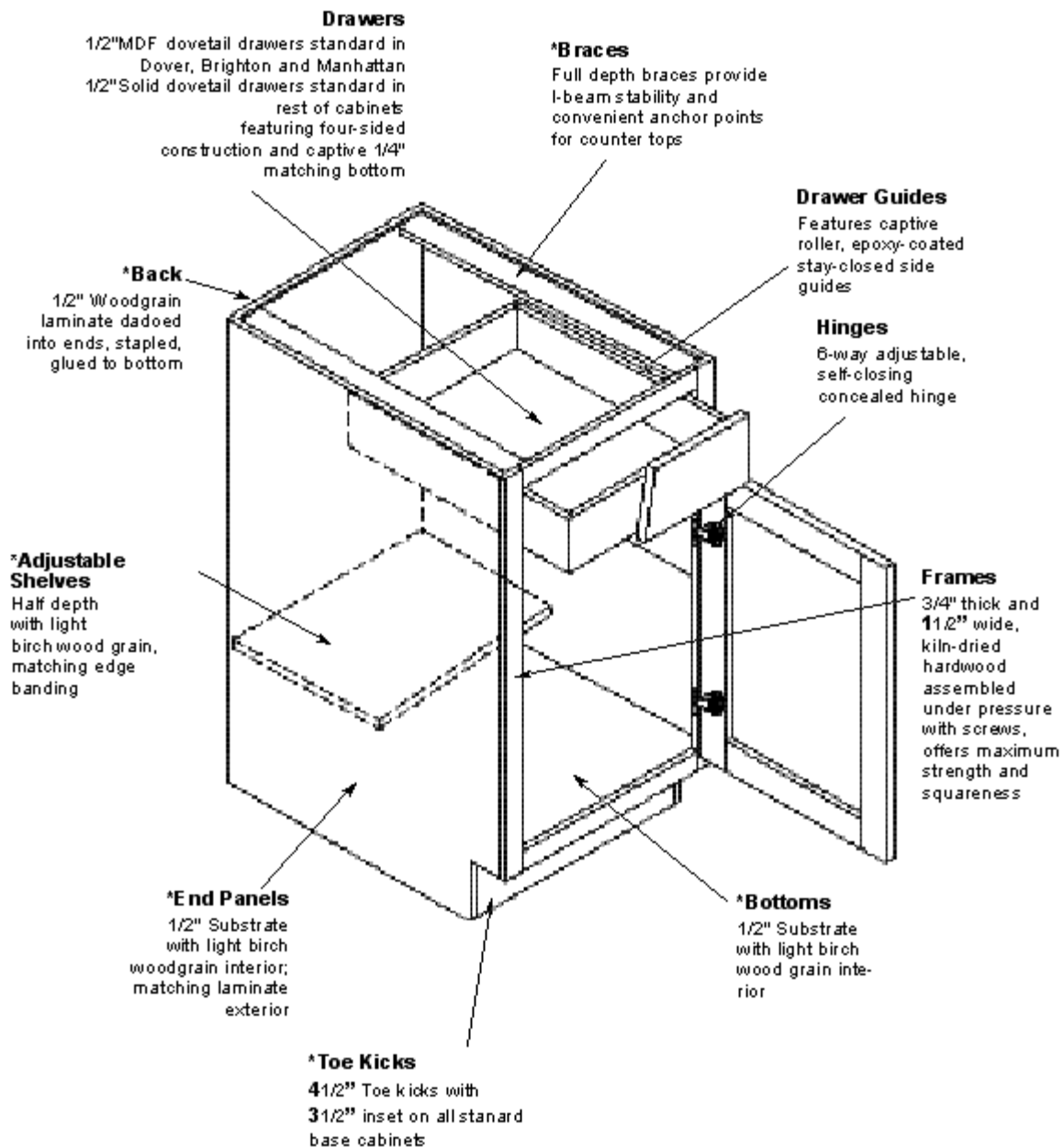


CHESTNUT

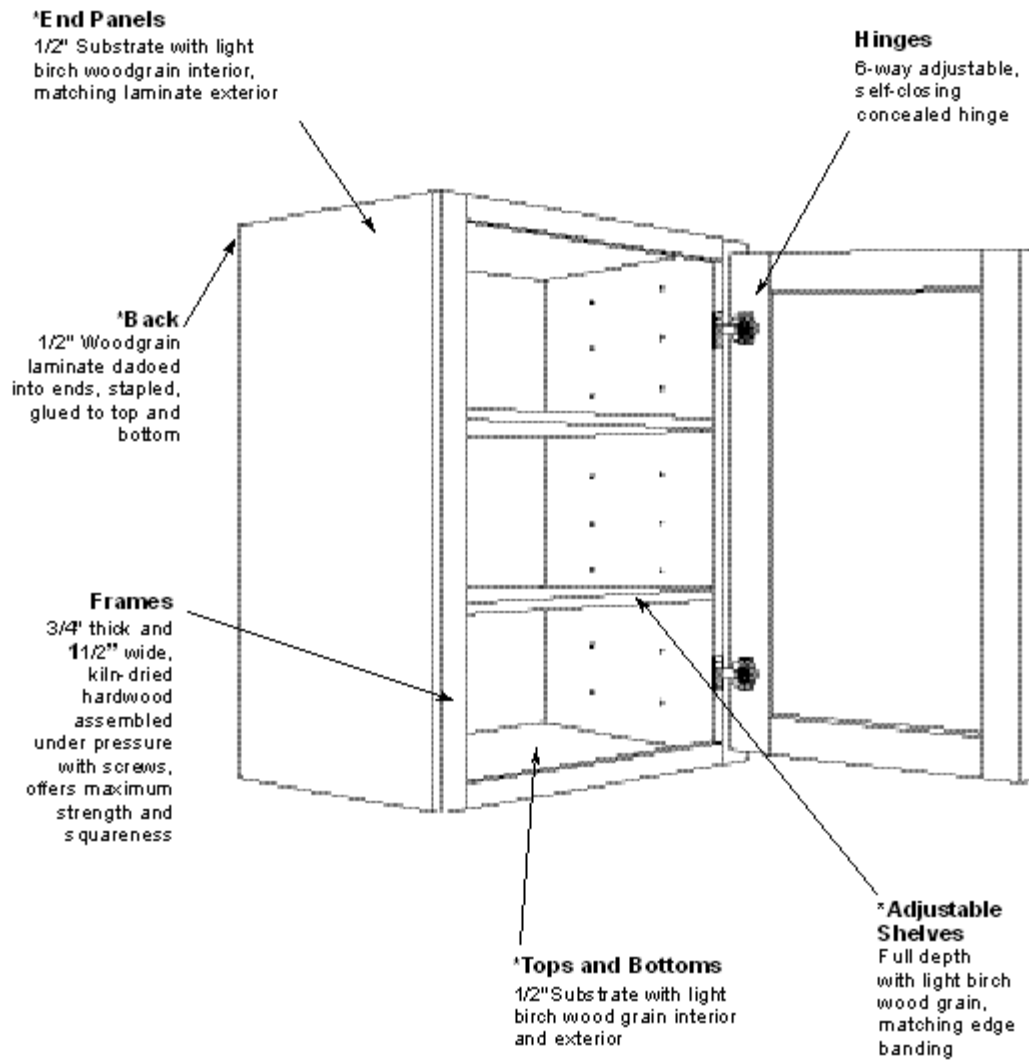


COFFEE

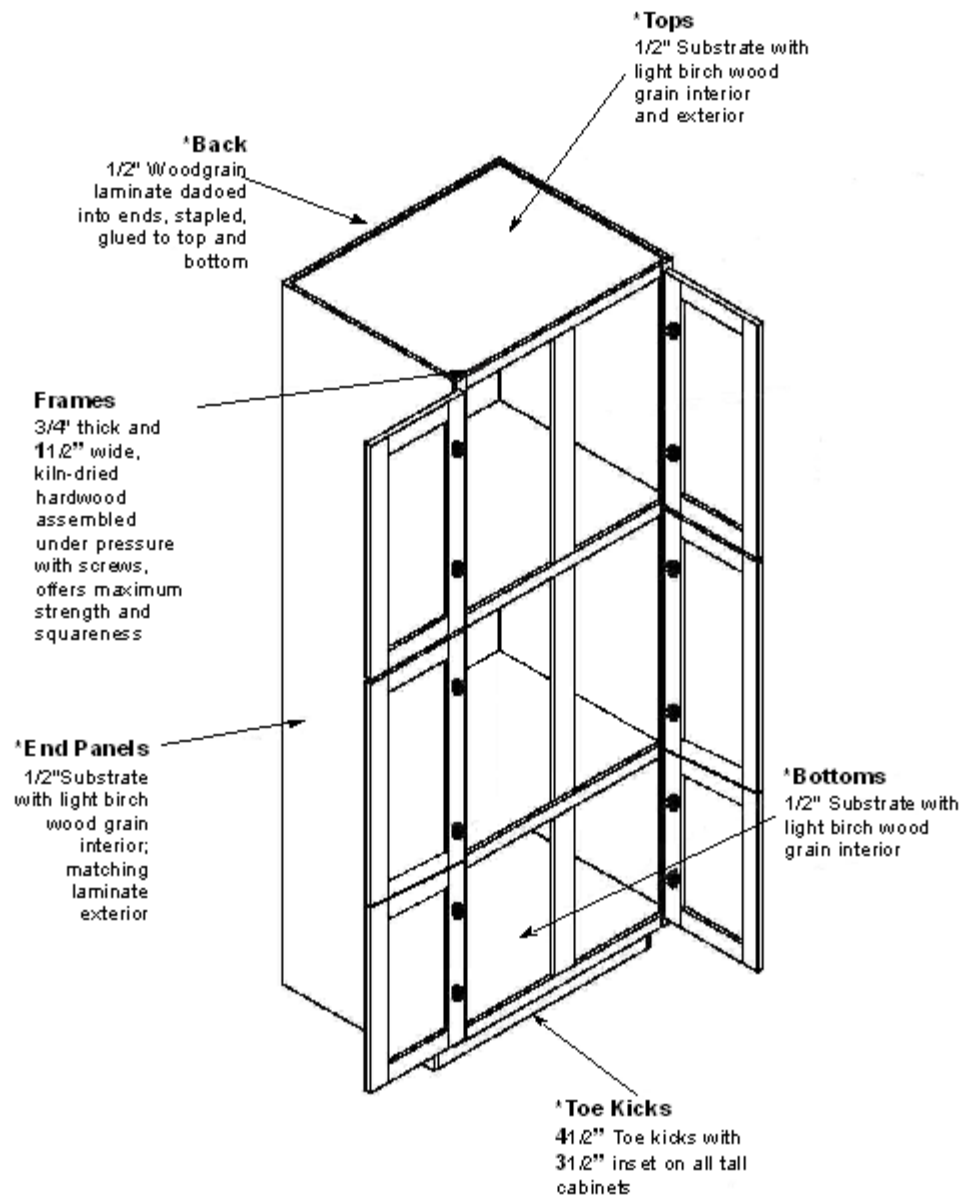
Base Cabinet Features



Wall Cabinet Features



Tall Cabinet Features





Plywood Construction HUD

- * Wall and base ends are 1/2" hardwood plywood with matching laminate exterior and light Maple laminate interior.
- * Wall and base backs are 1/2" hardwood plywood with light Maple laminate.
- * Base bottoms are 1/2" hardwood plywood with light Maple laminate.
- * Wall top and bottoms are 1/2" hardwood plywood with light Maple laminate.
- * Shelves are 1/2" hardwood plywood with light maple laminate and matching PVC edge banding.
- * Drawer fronts, doors and face frame are solid lumber.
- * Drawer boxes are 1/2" solid lumber, dovetailed construction with matching 1/4" MDF bottom.
- * Toe kick 3/4" pressure treated lumber full height and attached to end panels.
- * All ends, tops, and bottoms are glued and stapled into a dado at the face frame.
- * All ends and backs are dadoed to accept tops and bottoms.
- * All frame material is 3/4" X 1 1/2" solid lumber.

AVAILABLE DOOR STYLES

MAPLE

MANHATTAN
PRESCOTT

OAK

OXFORD

AVAILABLE COLORS

MAPLE

CHESTNUT
COFFEE
GINGER
HONEY
PECAN
CARMEL

OAK

CINNAMON
NATURAL
PECAN
COFFEE



Smart Severe Use Standards

- Wall and Base backs are 12mm exterior grade 7 ply hardwood plywood with light maple laminate.
- Backs are glued and mechanically fastened to rabbet in ends.
- Base bottoms are 12 mm exterior grade 7 ply hardwood plywood with light maple laminate. Bottoms are glued into dados all four sides.
- Wall Tops and Bottoms are 12 mm exterior grade 7 ply hardwood plywood with light maple laminate. Top and bottoms are glued into dados all four sides
- Shelves are 12 mm exterior grade 7 ply hardwood plywood with light maple laminate and matching PVC edge banding.
- Countertop attachment rails are 12 mm exterior grade 7 ply hardwood plywood are glued into face frame, side and back.
- Drawer fronts, doors and face frames are made with American Hardwood solid lumber.
- Face Frame stile and rail is dimensioned 3/4" x 1-1/2" full profile.
- Doors are fitted with heavy duty concealed 6- way adjustable hinges .
- Drawer boxes are 1/2" solid Maple hardwood with dovetailed construction and matching 1/4"plywood bottom.
- Drawer slides are 75 lbs metal slides.
- Toe kick is of 2 x 6 construction with ACQ pressure treated southern yellow pine full height toe kick attached to all surfaces for the toughest environments.
- Independent third party testing and material verification nationally recognized NTA Testing Laboratories.
- Independent Quarterly QA Audits by NTA listed on Smart web site at: www.smartcabinetry.com

* NTA is a registered trademark of NTA Inc. (www.NTAINC.com)

AVAILABLE DOOR STYLES

MAPLE

MANHATTAN
PRESCOTT

OAK

OXFORD

AVAILABLE COLORS

MAPLE

CHESTNUT
COFFEE
GINGER
HONEY
PECAN
CARMEL

OAK

CINNAMON
NATURAL
PECAN
COFFEE